



Total area: approx. 75.0 sq. metres (807.4 sq. feet)



26 Senwick Road, Wellingborough, NN8 1NH

£195,000

WELLINGBOROUGH TRAIN STATION ON YOUR DOORSTEP! Ideally located for Wellingborough train station and the town centre is this smart and spacious bay fronted Victorian home which is presented in good condition throughout. This lovely home benefits from: 2 generous double bedrooms, modern kitchen with utility area, large bathroom, UPVC double glazed windows, gas radiator central heating with combination boiler and quality floor coverings & interior decor. The accommodation on offer is as follows: Entrance hall, lounge/dining area, kitchen, first floor landing, 2 double bedrooms and large bathroom. To the rear is a pleasant garden with a decked area leading to a lawn garden and storage shed and gated rear access.

Council Tax Band B

CALL HAWKSIBYS NOW TO ARRANGE YOUR VIEWING.



Entrance Hall

Lounge  
12'0" x 10'9"

Dining Room  
11'10" x 10'4"

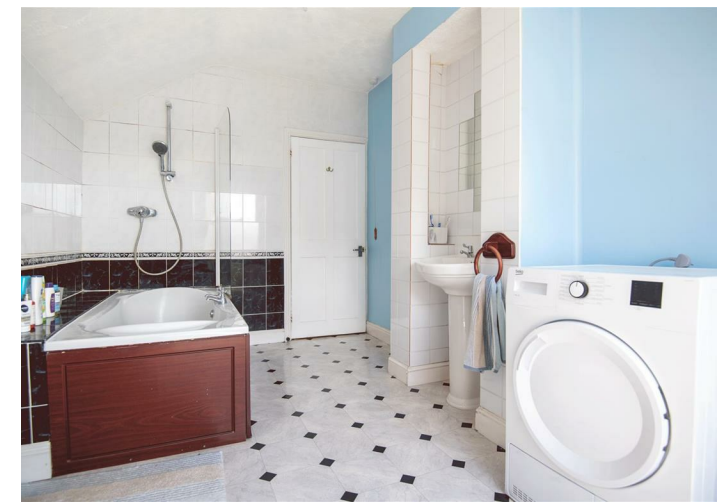
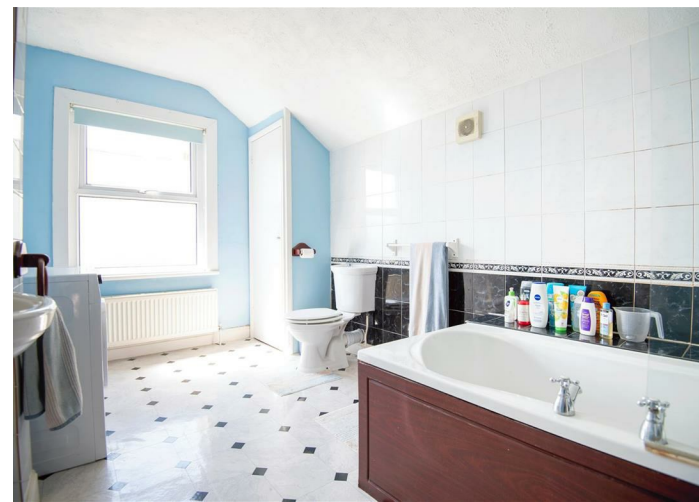
Kitchen  
13'3" x 7'9"

Utility Area

Bedroom 1  
10'7" x 15'11"

Bedroom 2  
12'2" x 10'9"

Bathroom  
13'3" x 8'0"



Tenure: Freehold  
Council Tax Band:

Viewing strictly by  
appointment with  
Hawksbys on 01933  
724444

Agents Note: Hawksbys have not tested any apparatus, equipment, fitting or services and so cannot verify they are in working order. The Buyer is advised to obtain verification from their Solicitor or Surveyor.

Internal Photographs: If photographs are included showing the interior of a property, these are to show the layout, and purchasers should check to confirm whether any appliances are included in the purchase price.

Offer Procedure: To make an offer you will need to make an appointment with our Financial Advisor to be able to process your offer in the best possible light.

Floor Plans: The plans included in these details are provided for guidance purposes only to show the general layout of the property, they are in some instances NOT to scale.

Buying a house can be complex and stressful. We try very hard to make the transaction as smooth and as trouble free as possible for buyers by guiding them through the process at every stage, including helping them with their mortgage arrangements.

**YOUR HOME IS AT RISK IF YOU DO NOT KEEP UP REPAYMENTS ON A MORTGAGE OR ANY OTHER LOANS SECURED ON IT.**  
Life Assurance usually required.

**AGENTS NOTE: THE ICON ON THE MAP REPRESENTING THE PROPERTY DOES NOT SHOW ITS EXACT POSITION IN RELATION TO THE ROAD OR CUL-DE-SAC.**

Some of the photographs are taken with an extreme wide lens, as as 18mm, and in some circumstances make the rooms look larger than they are!

